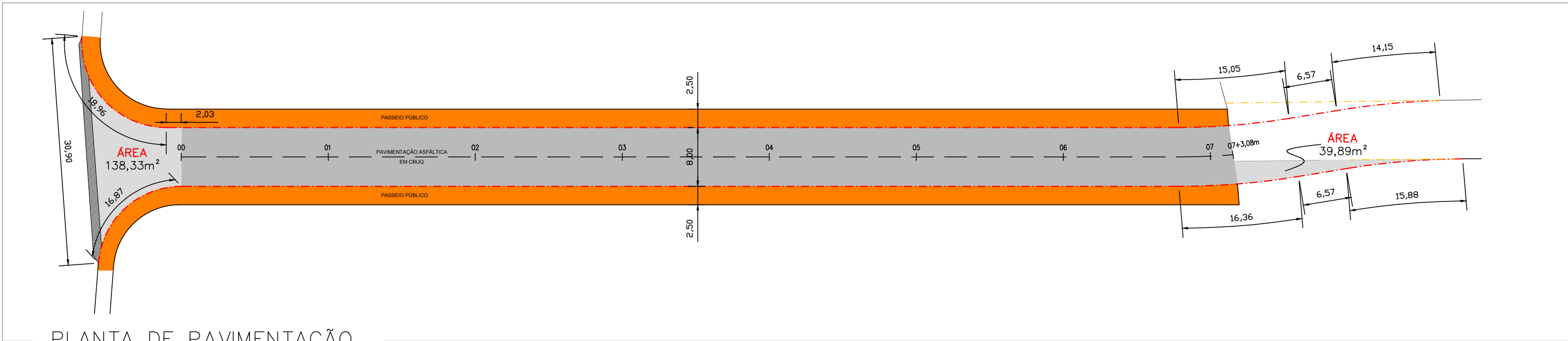
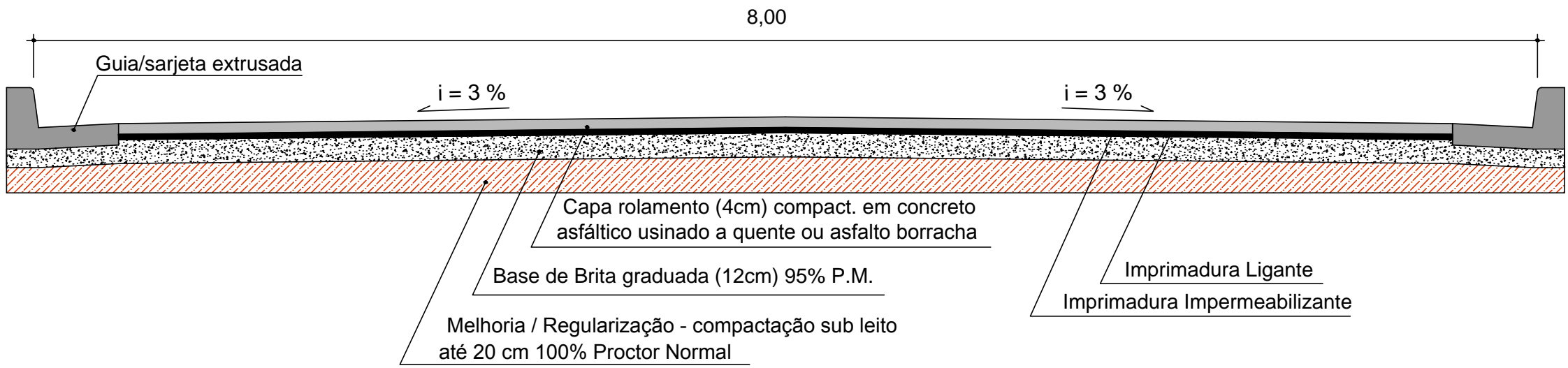
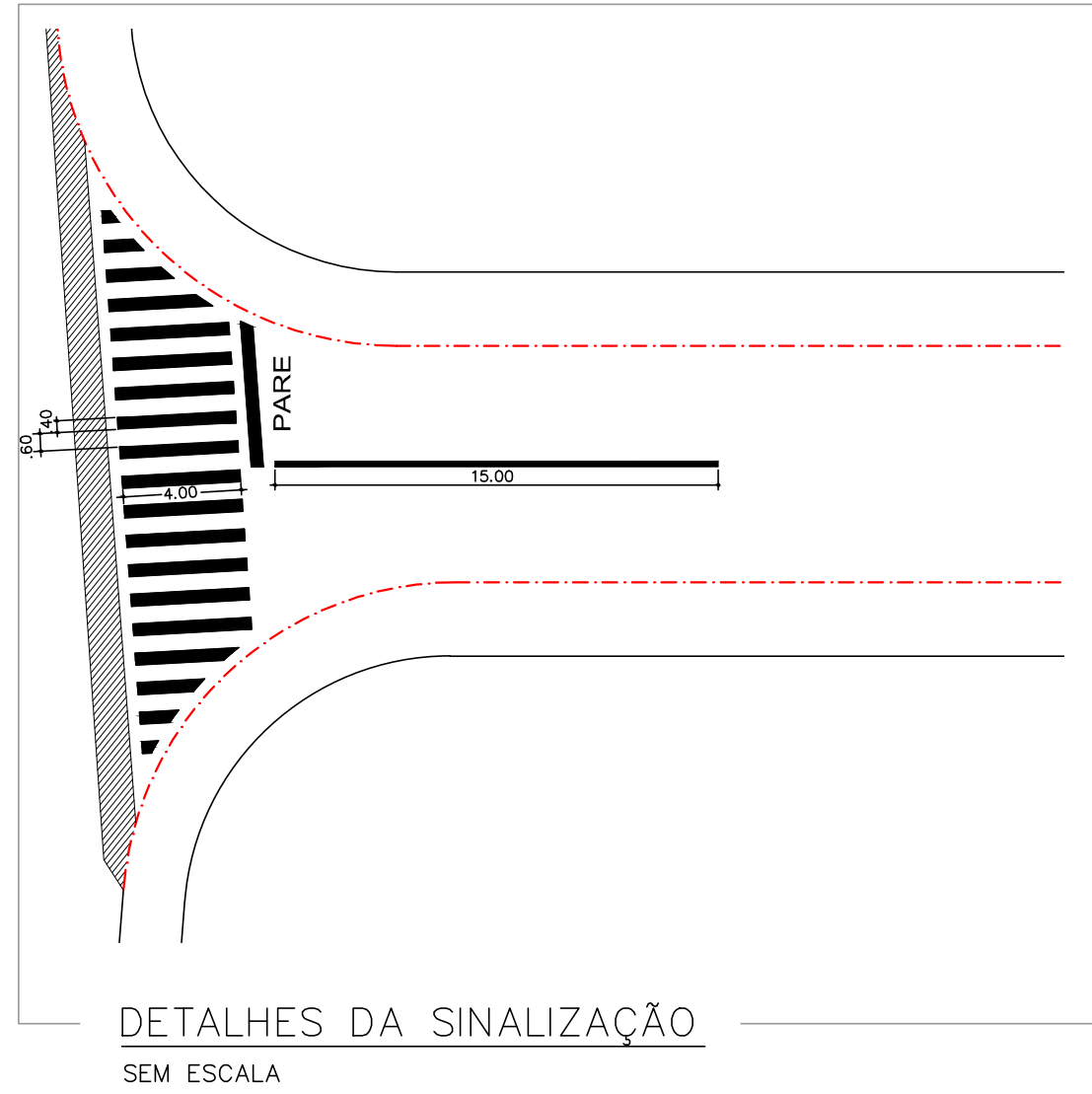
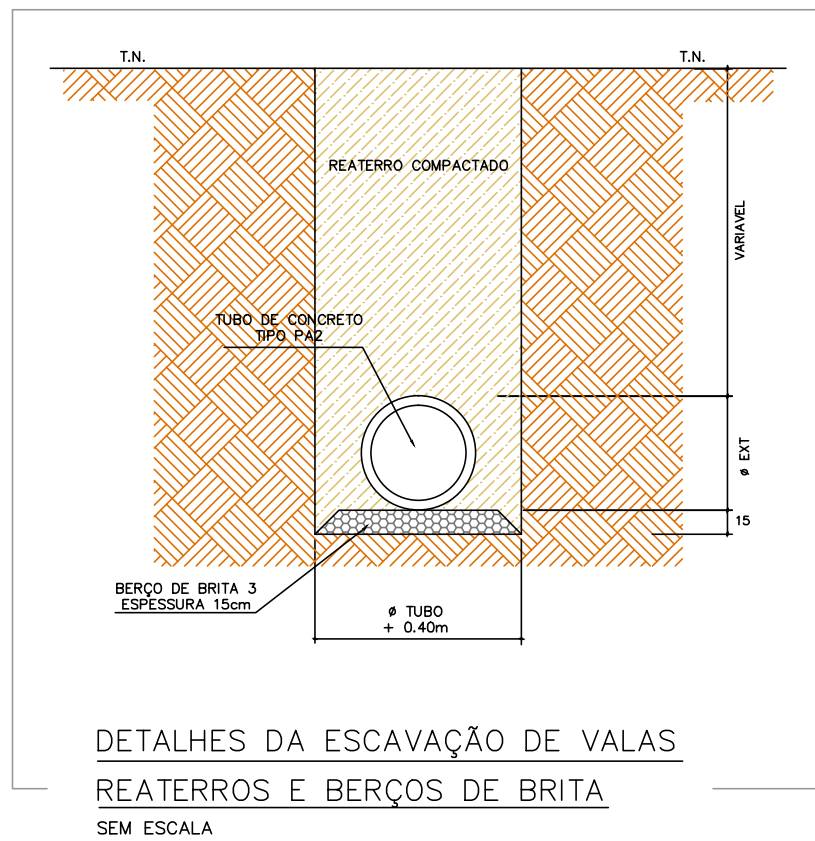
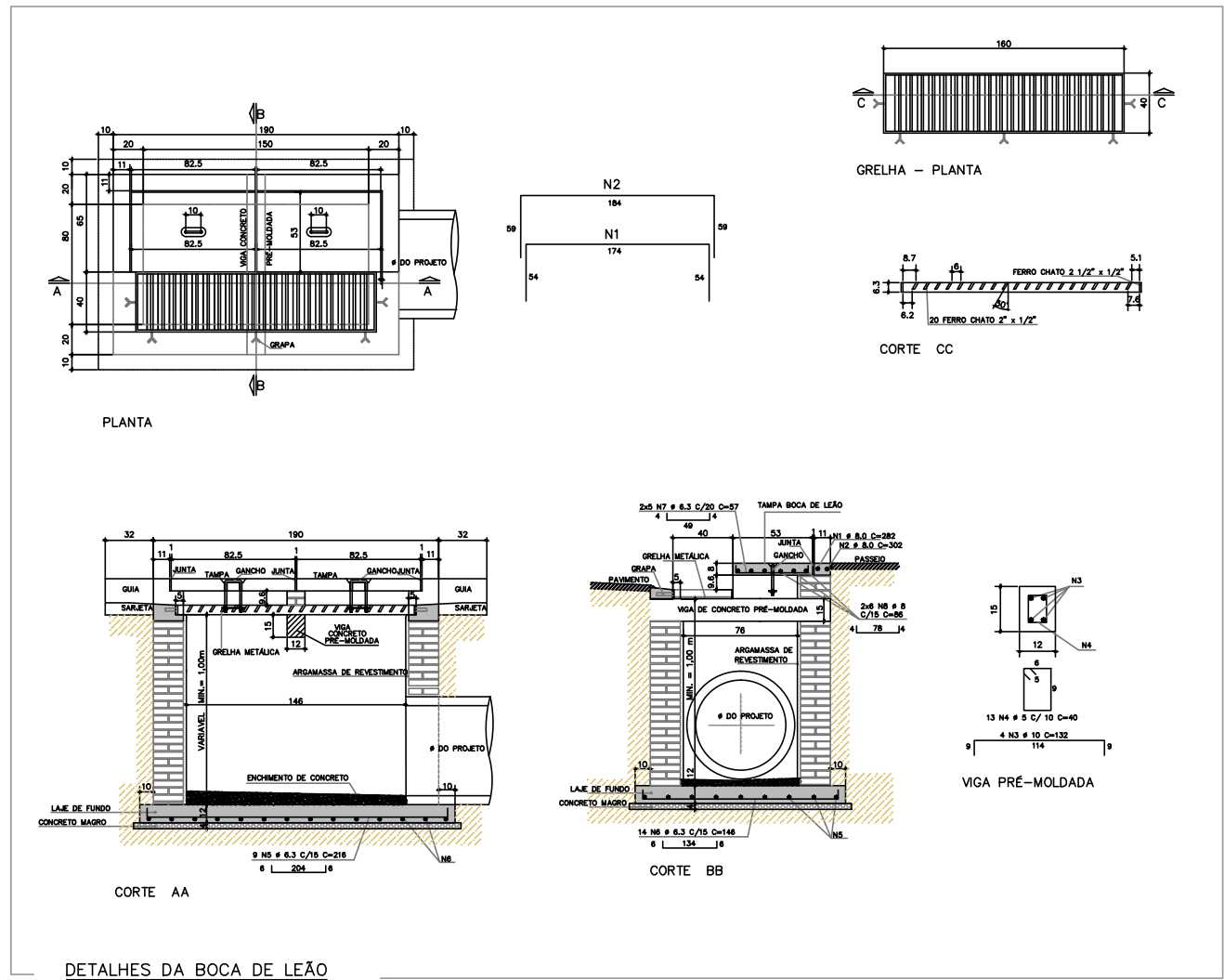
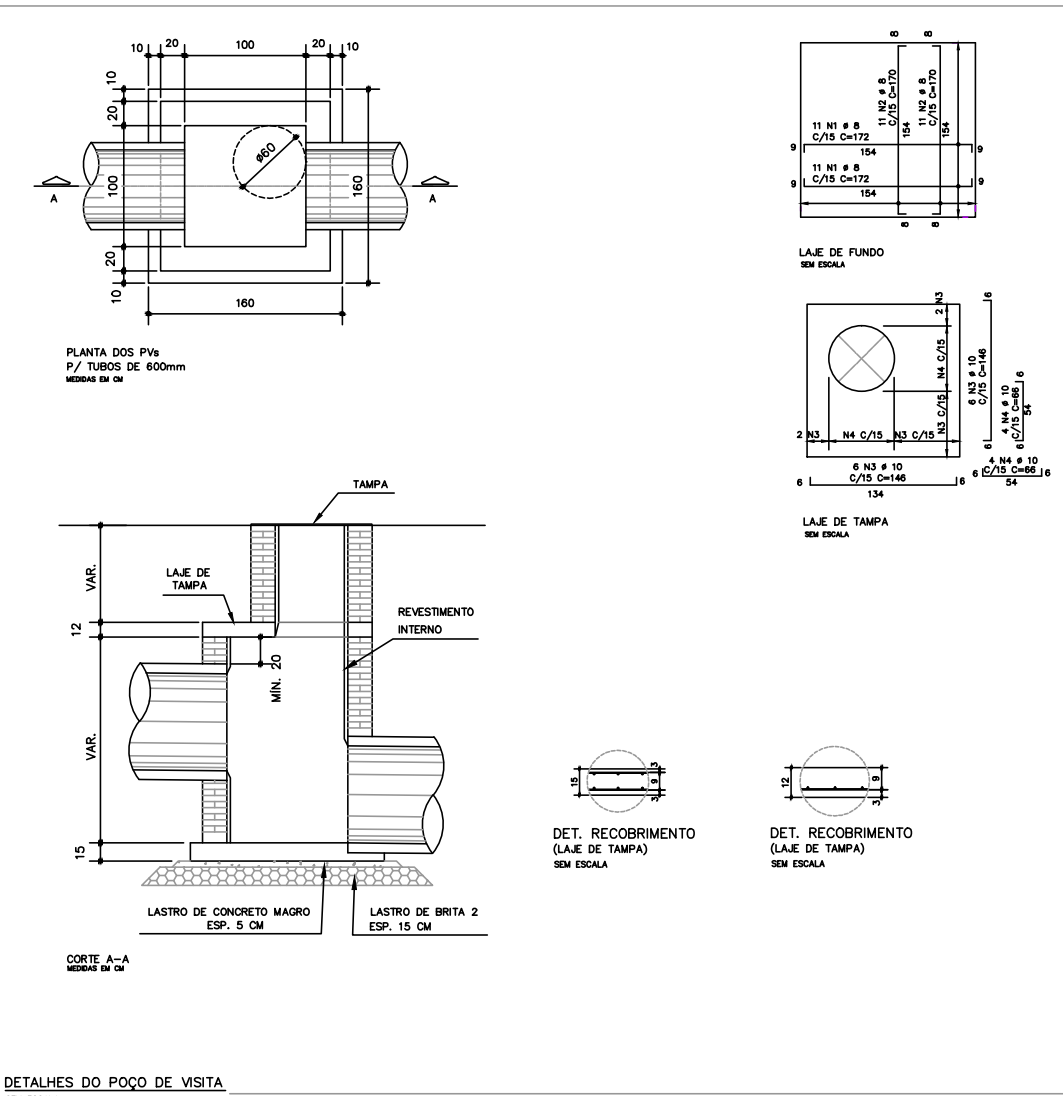




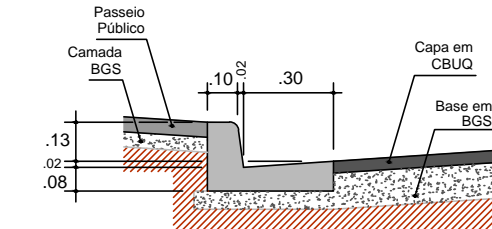
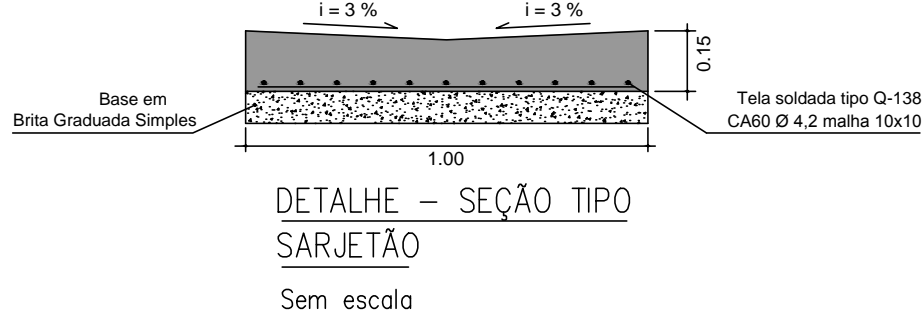
IMPLANTAÇÃO
Escala 1:1.000



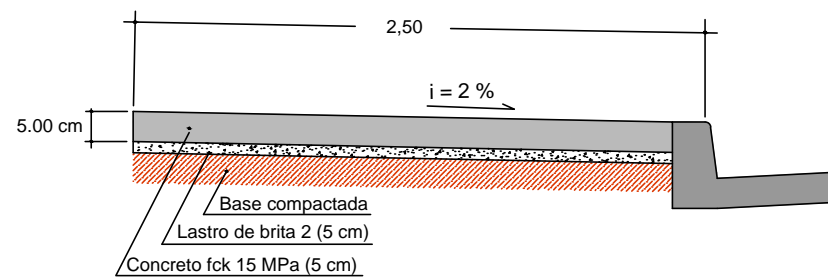
PLANTA DE PAVIMENTAÇÃO
Escala 1:500



DETALHE – PAV. DE VIA PÚBLICA EM CBUQ
Sem escala



DETALHE GUIA/SARJETA
Escala 1:25



DETALHE – SEÇÃO TIPO
PASSEIO PÚBLICO
Escala 1:100



PREFEITURA MUNICIPAL DE SÃO CARLOS – SP
SECRETARIA MUNICIPAL DE OBRAS PÚBLICAS

OBJETO: PAVIMENTAÇÃO E DRENAGEM DE VIAS URBANAS
LOCAL: RUA ANTONIO NOVAES, JARDIM DO BOSQUE,
SÃO CARLOS/SP

DESENHO:

Engº. Luiz Joaquim de Alencar Junior
CREA-SP: 5069708400

DATA: OUT/2020

ESCALA: INDICADAS

FOLHA: ÚNICA